

Brest: Rock Encased Bank – Surveyed With Sonic 2024

In one area of the harbour in Brest, France, the bank is encased with rocks. Previously, this has presented a challenging area for multibeam survey. The challenge comes from the shallow water and the many rocks, in the shallow water, that scatter acoustic energy in many directions. As related to the author, previous attempts to use multibeam echosounders to survey this bank were less than successful.

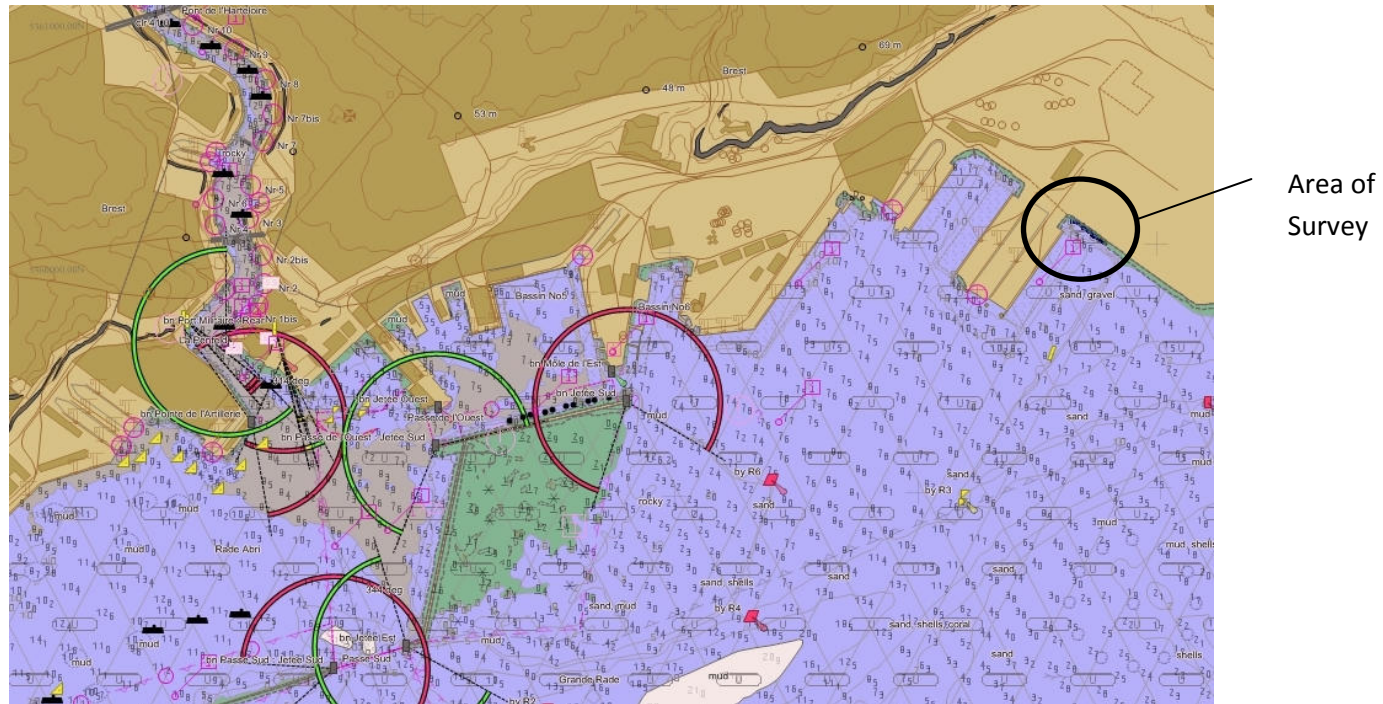


Figure 1: Brest, France Harbour

On 18 Jun 2009, R2Sonic surveyed the bank with the Sonic 2024, recording both bathymetry and Snippet data, with the following graphic results. The Sonic 2024 was able to obtain results far exceeding any previous survey efforts. The Sonic 2024 was able to obtain clean and distinct data for the entire bank.



Figure 2: Rock covered bank at low tide

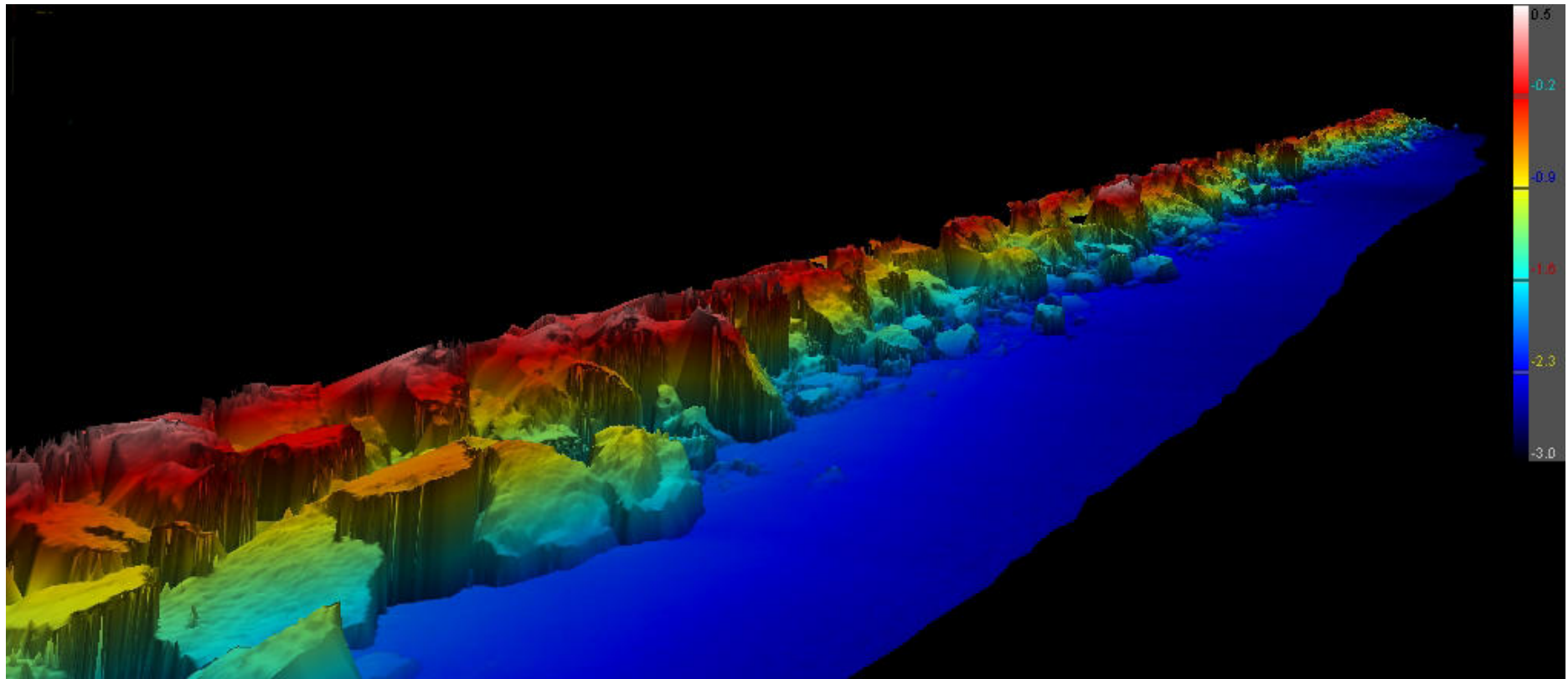


Figure 3: Sonic 2024 Bathymetry

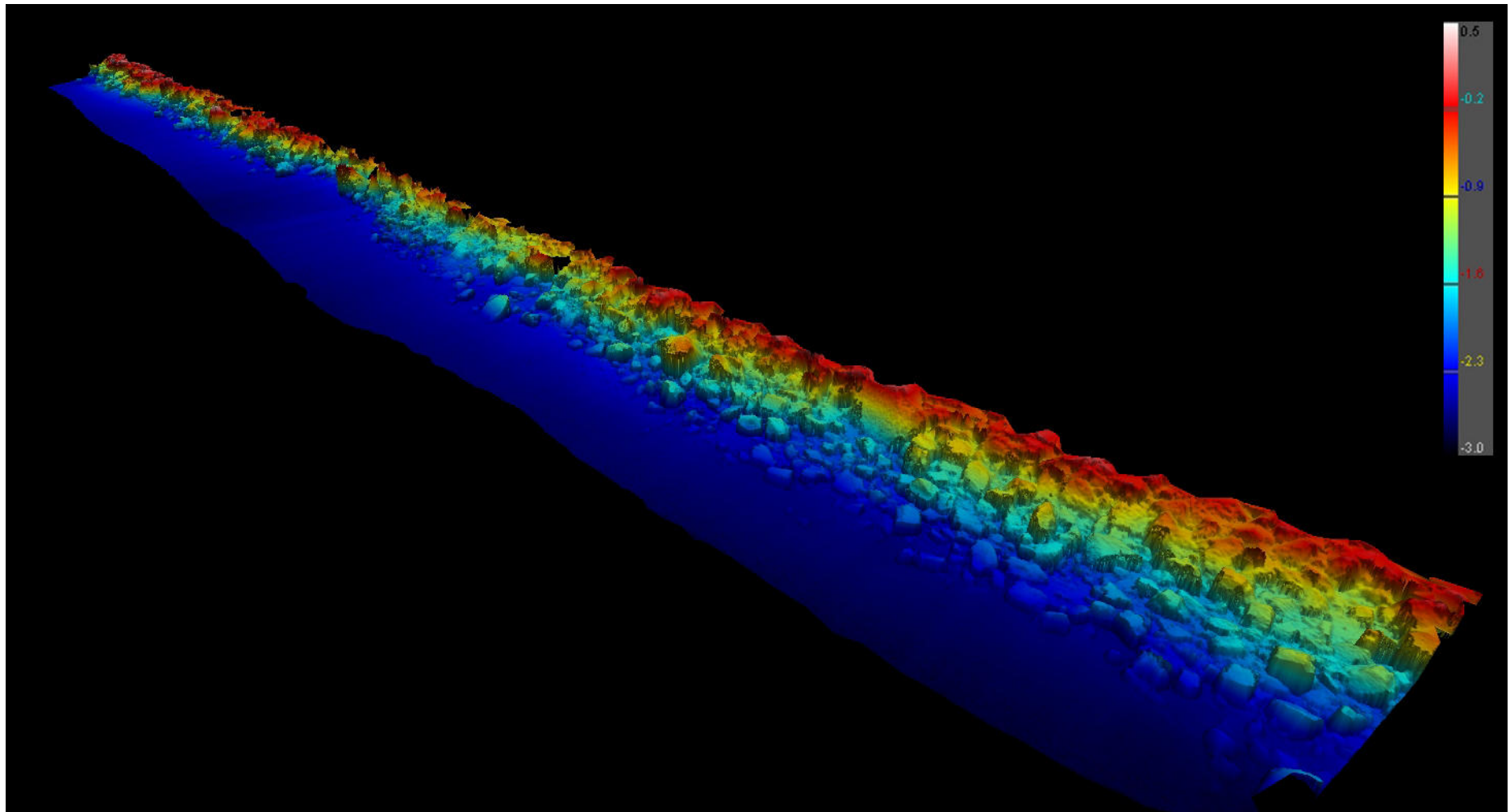


Figure 4: Sonic 2024 bathymetry - longer view (lower right area also seen in Figure 5)

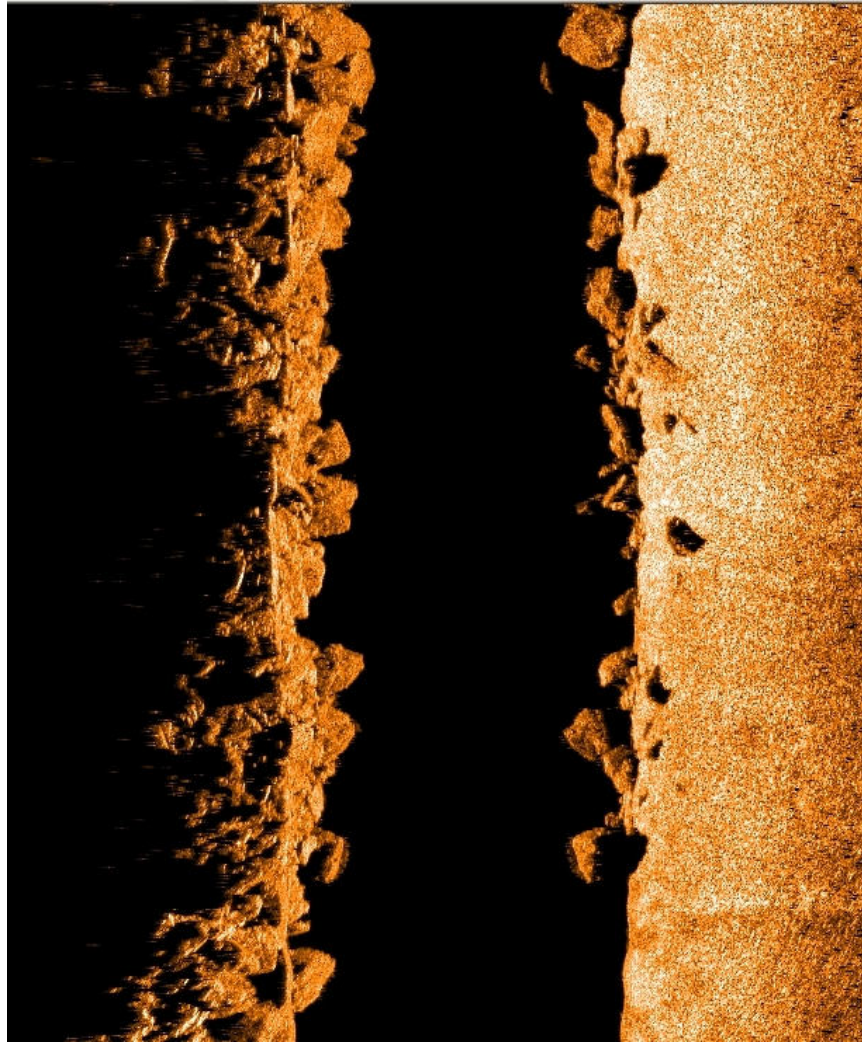


Figure 5: Sonic 2024 Snippet of bank section

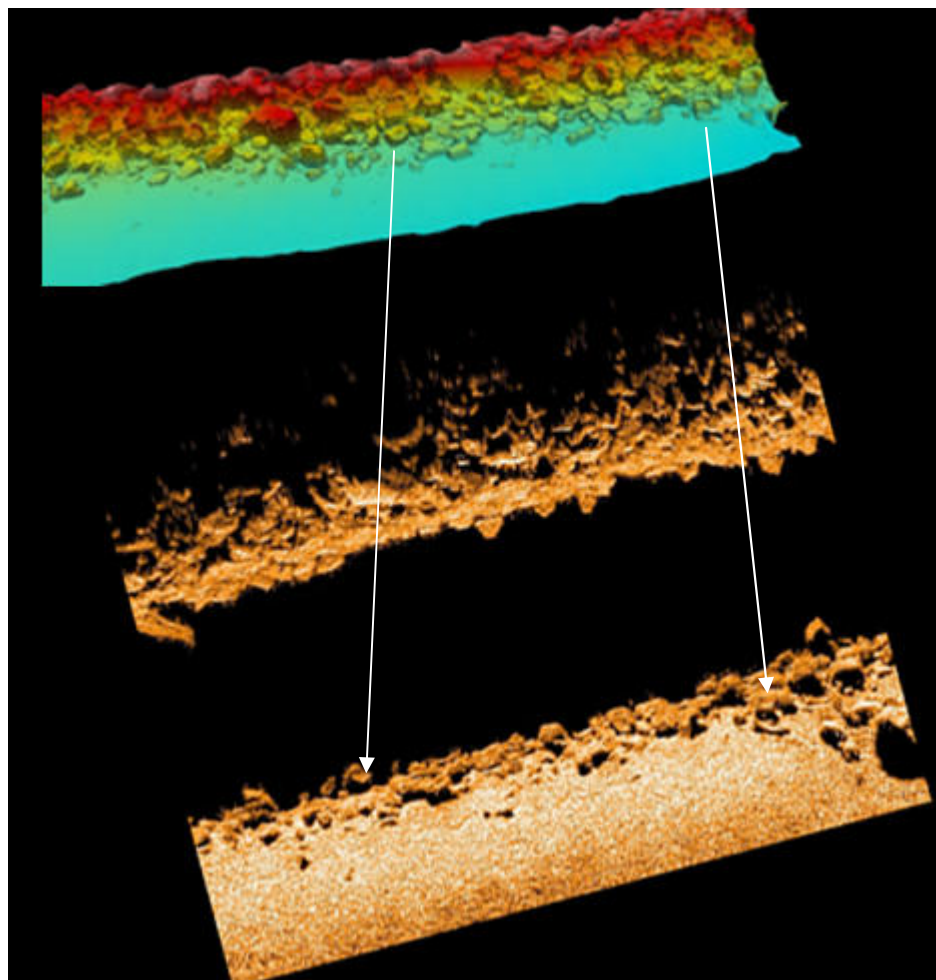


Figure 6: Coordination of Sonic 2024 bathymetry and Snippet